

Permanent Monitoring Units

Blast Date:	Blast no.	Blast time:	92 Cougarstone Manor SW,		9555 2 Avenue SW,		97 Cougar Ridge Close SW,		130 Cougarstone Close SW,		77 Cougar Ridge Close SW,		128 Cougarstone Manor		120 Cougarstone Common		152 Cougarstone Common		135 Cougarstone Common	
			PPV	AOP	PPV	AOP	PPV	AOP	PPV	AOP	PPV	AOP	PPV	AOP	PPV	AOP	PPV	AOP	PPV	AOP
6-Nov-19	WCRR-01	16:05	0.25mm/s	108.80dB(L)	1.02mm/s	112.00dB(L)	0.25mm/s	110.60dB(L)	0.25mm/s	109.20dB(L)	0.38mm/s	103.50dB(L)								
7-Nov-19	WCRR-02	16:05	0.25mm/s	110.2dB(L)	1.90mm/s	118.2dB(L)	0.51mm/s	103.5dB(L)	0.25mm/s	115.7dB(L)	0.51mm/s	108.0dB(L)								
8-Nov-19	WCRR-03	16:09	0.25mm/s	97.5dB(L)	1.52mm/s	115.6dB(L)	0.38mm/s	101.0dB(L)	0.25mm/s	111.2dB(L)	0.38mm/s	102.8dB(L)								
12-Nov-19	WCRR-04	16:00	0.25mm/s	109.5dB(L)	0.51mm/s	113.3dB(L)	0.38mm/s	104.9dB(L)	0.25mm/s	107.5dB(L)	0.38mm/s	109.2dB(L)								
13-Nov-19	WCRR-05	16:00	0.25mm/s	114.0dB(L)	1.40mm/s	121.0dB(L)	0.51mm/s	108.0dB(L)	0.25mm/s	118.1dB(L)	0.38mm/s	112.6dB(L)								
14-Nov-19	WCRR-06	16:00	0.38mm/s	102.8dB(L)	1.78mm/s	121.8dB(L)	0.76mm/s	105.5dB(L)	0.25mm/s	110.6dB(L)	0.63mm/s	104.9dB(L)								
15-Nov-19	WCRR-07	16:00	0.51mm/s	122.4dB(L)	2.54mm/s	121.5dB(L)	1.02mm/s	120.0dB(L)	0.76mm/s	136.0dB(L)	0.51mm/s	117.9dB(L)								
16-Nov-19	WCRR-08	16:00	0.25mm/s	119.0dB(L)	1.78mm/s	122.4dB(L)	0.38mm/s	107.5dB(L)	0.25mm/s	127.8dB(L)	0.51mm/s	110.9dB(L)								
16-Nov-19	WCRR-08	16:20	0.51mm/s	114.0dB(L)	2.29mm/s	124.0dB(L)	0.76mm/s	116.4dB(L)	0.25mm/s	111.2dB(L)	0.63mm/s	115.6dB(L)								
18-Nov-19	WCRR-09	16:00	0.51mm/s	109.5dB(L)	2.03mm/s	118.8dB(L)	1.14mm/s	112.8dB(L)	0.25mm/s	102.8dB(L)	0.76mm/s	110.6dB(L)								
19-Nov-19	WCRR-10	16:15	0.25mm/s	98.8dB(L)	0.89mm/s	110.9dB(L)	0.25mm/s	98.8dB(L)	0.25mm/s	91.5dB(L)	0.38mm/s	98.8dB(L)								
20-Nov-19	WCRR-11	16:04	0.89mm/s	119.0dB(L)	6.10mm/s	133.7dB(L)	1.78mm/s	121.8dB(L)	0.38mm/s	109.5dB(L)	1.40mm/s	120.1dB(L)								
21-Nov-19	WCRR-12	16:02	0.89mm/s	109.5dB(L)	3.68mm/s	123.5dB(L)	2.41mm/s	113.3dB(L)	0.38mm/s	104.9dB(L)	1.14mm/s	112.0dB(L)								
22-Nov-19	WCRR-13	16:02	0.89mm/s	115.0dB(L)	4.44mm/s	125.5dB(L)	1.78mm/s	115.2dB(L)	0.25mm/s	124.7dB(L)	1.27mm/s	116.7dB(L)								
23-Nov-19	WCRR-14	15:35	0.89mm/s	124.1dB(L)	2.79mm/s	121.7dB(L)	2.41mm/s	120.2dB(L)	0.51mm/s	129.0dB(L)	1.27mm/s	120.2dB(L)								
25-Nov-19	WCRR-15	16:17	0.51mm/s	105.5dB(L)	2.92mm/s	117.5dB(L)	1.40mm/s	109.2dB(L)	0.25mm/s	117.6dB(L)	0.89mm/s	108.4dB(L)								
26-Nov-19	WCRR-16	15:58	0.51mm/s	109.9dB(L)	2.29mm/s	115.2dB(L)	0.51mm/s	109.5dB(L)	0.25mm/s	101.9dB(L)	0.63mm/s	104.2dB(L)								
27-Nov-19	WCRR-17	15:58	0.51mm/s	118.3dB(L)	2.79mm/s	123.4dB(L)	0.89mm/s	112.3dB(L)	0.25mm/s	115.0dB(L)	0.63mm/s	112.0dB(L)								
28-Nov-19	WCRR-18	16:00	0.25mm/s	101.0dB(L)	1.14mm/s	116.7dB(L)	0.63mm/s	102.8dB(L)	0.25mm/s	94.0dB(L)	0.38mm/s	101.0dB(L)								
29-Nov-19	WCRR-19	16:00	0.51mm/s	110.0dB(L)	2.79mm/s	119.8dB(L)	0.89mm/s	112.0dB(L)	0.51mm/s	101.9dB(L)	0.76mm/s	111.2dB(L)								
30-Nov-19	WCRR-20	16:00	1.78mm/s	113.5dB(L)	3.94mm/s	128.6dB(L)	2.29mm/s	116.4dB(L)	0.63mm/s	104.2dB(L)	2.41mm/s	117.4dB(L)								
2-Dec-19	WCRR-21	16:00	1.14mm/s	118.3dB(L)	2.54mm/s	122.3dB(L)	2.03mm/s	118.0dB(L)	0.38mm/s	128.8dB(L)	1.40mm/s	120.9dB(L)								
3-Dec-19	WCRR-22	16:00	0.76mm/s	112.0dB(L)	2.29mm/s	122.8dB(L)	1.02mm/s	112.0dB(L)	0.25mm/s	113.3dB(L)	0.64mm/s	111.8dB(L)								
4-Dec-19	WCRR-23	16:03	0.51mm/s	109.5dB(L)	2.03mm/s	120.3dB(L)	1.27mm/s	108.8dB(L)	0.38mm/s	115.0dB(L)	0.89mm/s	109.9dB(L)								
5-Dec-19	WCRR-24	16:00	1.91mm/s	113.8dB(L)	3.30mm/s	123.6dB(L)	2.67mm/s	115.2dB(L)	0.64mm/s	108.0dB(L)	2.16mm/s	114.2dB(L)								
6-Dec-19	WCRR-25	15:58	0.76mm/s	111.5dB(L)	1.52mm/s	121.6dB(L)	1.02mm/s	113.5dB(L)	0.38mm/s	101.9dB(L)	1.27mm/s	113.1dB(L)								
7-Dec-19	WCRR-26	16:03	0.64mm/s	113.8dB(L)	2.03mm/s	116.3dB(L)	1.52mm/s	113.3dB(L)	0.38mm/s	102.8dB(L)	1.02mm/s	112.3dB(L)								
9-Dec-19	WCRR-27	16:02	1.02mm/s	110.6dB(L)	1.78mm/s	119.9dB(L)	2.03mm/s	113.8dB(L)	0.38mm/s	101.0dB(L)	1.40mm/s	111.8dB(L)								
10-Dec-19	WCRR-28	15:58	0.38mm/s	109.2dB(L)	1.14mm/s	117.1dB(L)	0.64mm/s	110.9dB(L)	0.25mm/s	101.0dB(L)	0.64mm/s	108.8dB(L)								
11-Dec-19	WCRR-29	16:12	0.51mm/s	109.9dB(L)	1.52mm/s	120.2dB(L)	0.64mm/s	111.8dB(L)	0.38mm/s	101.0dB(L)	0.64mm/s	111.8dB(L)								
12-Dec-19	WCRR-30	16:02	1.02mm/s	113.8dB(L)	2.03mm/s	118.3dB(L)	2.03mm/s	115.4dB(L)	0.38mm/s	104.9dB(L)	1.40mm/s	114.0dB(L)								
17-Dec-19	WCRR-31	10:07	6.73mm/s	125.0dB(L)	0.76mm/s	109.2dB(L)	11.81mm/s	126.8dB(L)	1.02mm/s	113.5dB(L)	13.46mm/s	125.3dB(L)								
18-Dec-19	WCRR-32	16:30	7.11mm/s	122.4dB(L)	0.64mm/s	111.2dB(L)	8.76mm/s	122.7dB(L)	1.14mm/s	110.9dB(L)	11.56mm/s	124.0dB(L)								

Not Applicable
 Due to the distance between the blasts and adjacent structures, monitors were not required before January 2020.

Date/Time Tran At 15:58:01 November 20, 2019
 Trigger Source Geo: 5.00 mm/s
 Range Geo: 254 mm/s
 Sample Rate 5.0 sec. At 1024 Sps
 Job Number 8177

Serial Number BE7369 V 10.72-8.17 MiniMate Plus
 Battery Level 6.9 Volts
 Unit Calibration October 23, 2019 by Instantel
 File Name I36917FO.CP0W

Notes
 Location: 9555 2 Avenue SW, Calgary, AB
 Client: McCaw's Drilling and Blasting
 User Name: Explotech Engineering Ltd.
 General: Sandbagged on ground

Post Event Notes

Extended Notes

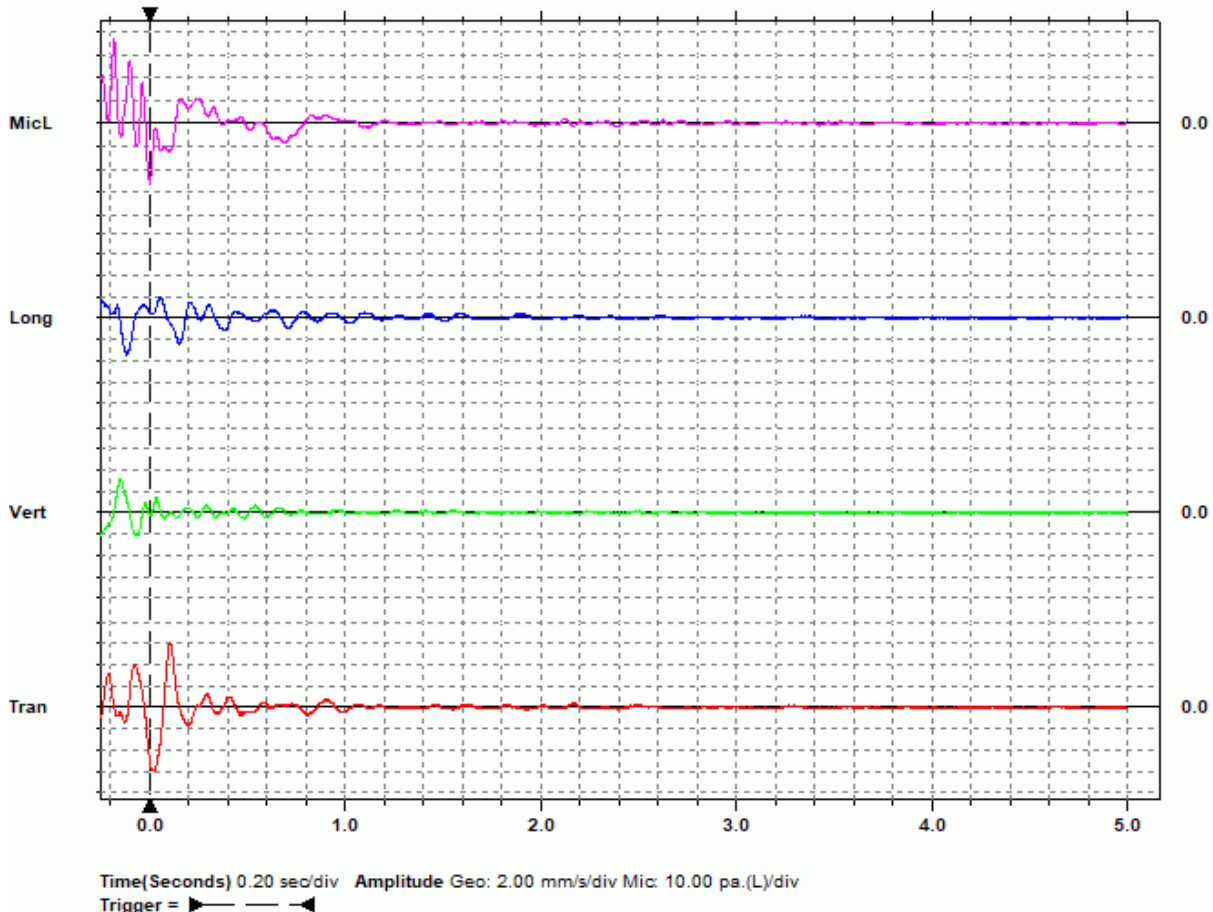
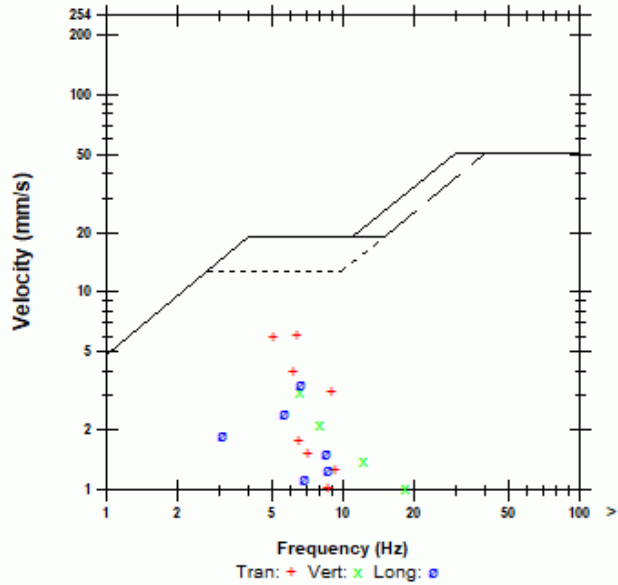
Combo Mode November 20, 2019 05:16:45
 Geophone is sandbagged along the Western wall in the backyard of 9555 2 Avenue SW adjacent ongoing blasting operations.

Microphone Linear Weighting
 PSPL 125.3 dB(L) at -0.184 sec.
 ZC Freq NA
 Channel Test Disabled

	Tran	Vert	Long	
PPV	6.10	3.17	3.43	mm/s
ZC Freq	6.4	6.5	6.6	Hz
Time (Rel. to Trig)	0.102	-0.155	-0.117	sec
Peak Acceleration	0.0398	0.0265	0.0265	g
Peak Displacement	0.193	0.0715	0.0809	mm
Sensor Check	Disabled	Disabled	Disabled	

Peak Vector Sum 6.12 mm/s At 0.102 sec.
 NA: Not Applicable

USBM RI8507 And OSMRE



Date/Time Tran At 15:58:01 November 20, 2019
Trigger Source Geo: 5.00 mm/s
Range Geo: 254 mm/s
Sample Rate 5.0 sec. At 1024 Sps
Job Number 8177

Serial Number BE7369 V 10.72-8.17 MiniMate Plus
Battery Level 6.9 Volts
Unit Calibration October 23, 2019 by Instantel
File Name I36917FO.CP0W

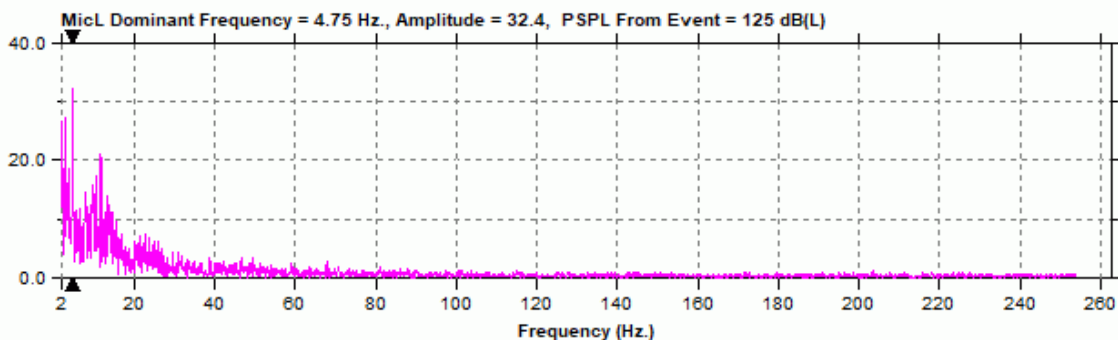
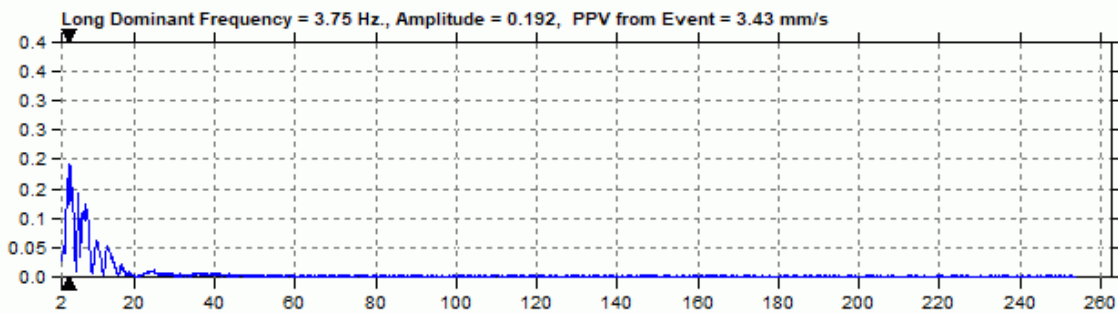
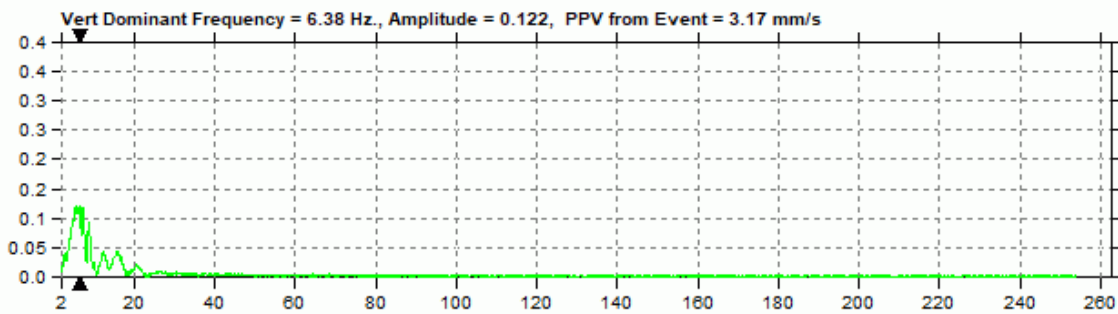
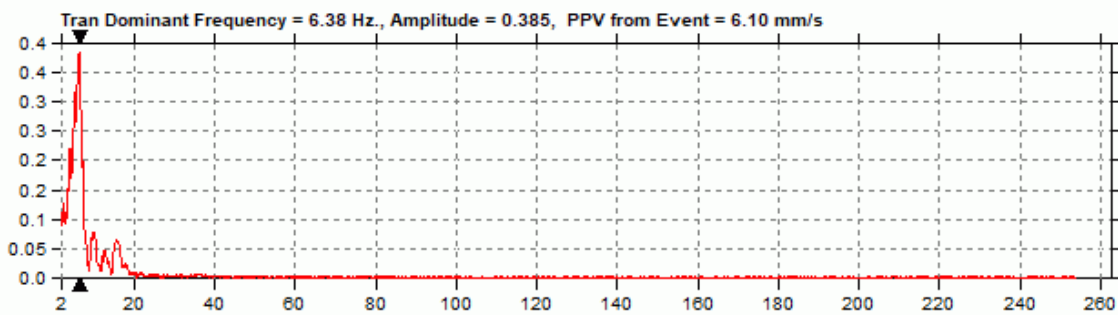
Notes

Location: 9555 2 Avenue SW, Calgary, AB
Client: McCaw's Drilling and Blasting
User Name: Explotech Engineering Ltd.
General: Sandbagged on ground

Extended Notes

Combo Mode November 20, 2019 05:16:45
Geophone is sandbagged along the Western wall in the backyard of 9555 2 Avenue SW adjacent ongoing blasting operations.

Post Event Notes



Date/Time Tran At 10:06:44 December 17, 2019
 Trigger Source Geo: 5.00 mm/s
 Range Geo: 254 mm/s
 Sample Rate 5.0 sec. At 1024 Sps
 Job Number 8177

Serial Number BE20408 V 10.72-8.17 MiniMate Plus
 Battery Level 7.0 Volts
 Unit Calibration October 21, 2019 by InstanTel
 File Name V40818T8.380W

Notes
 Location: 92 Cougarstone Manor SW, Calgary, AB
 Client: McCaw's Drilling and Blasting
 User Name: Explotech Engineering Ltd.
 General: Sandbagged on ground

Post Event Notes

Extended Notes

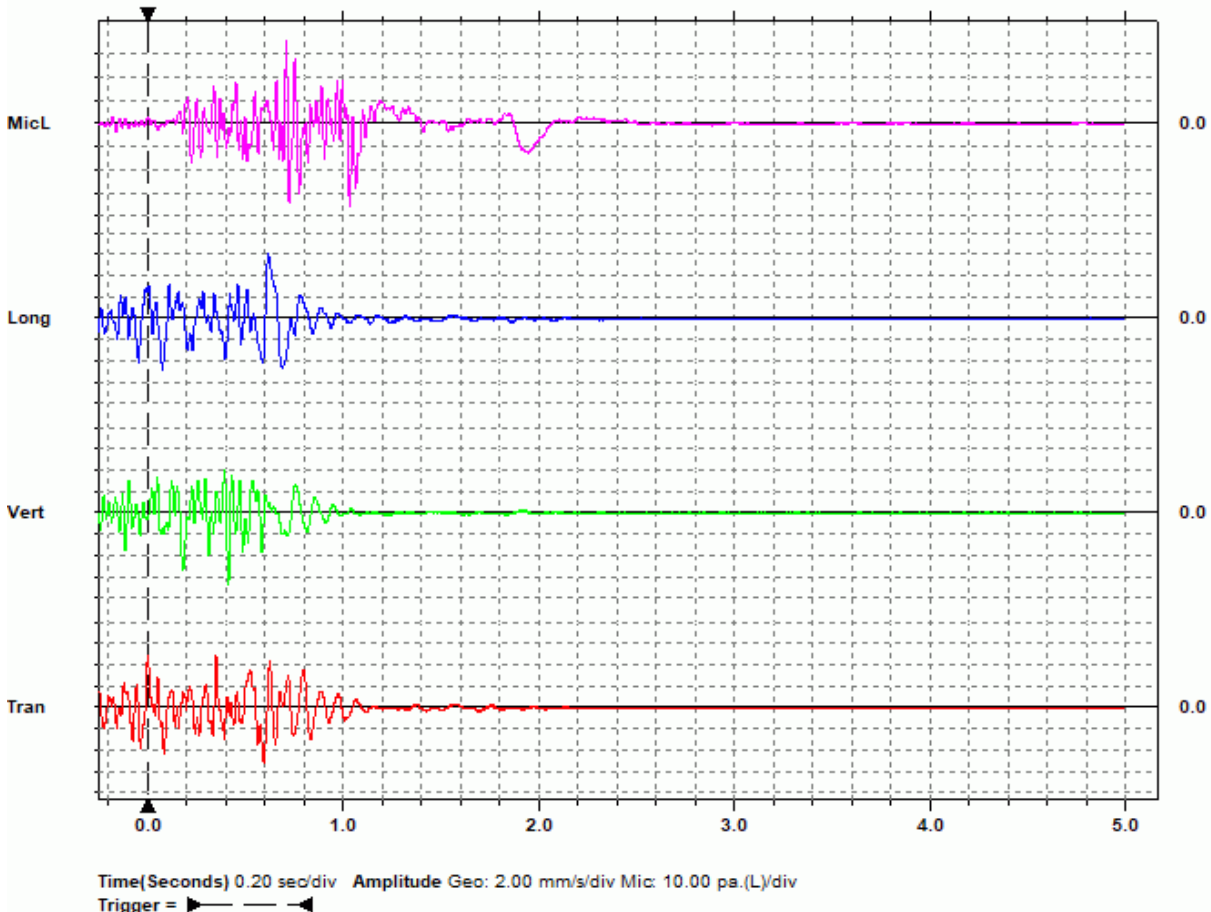
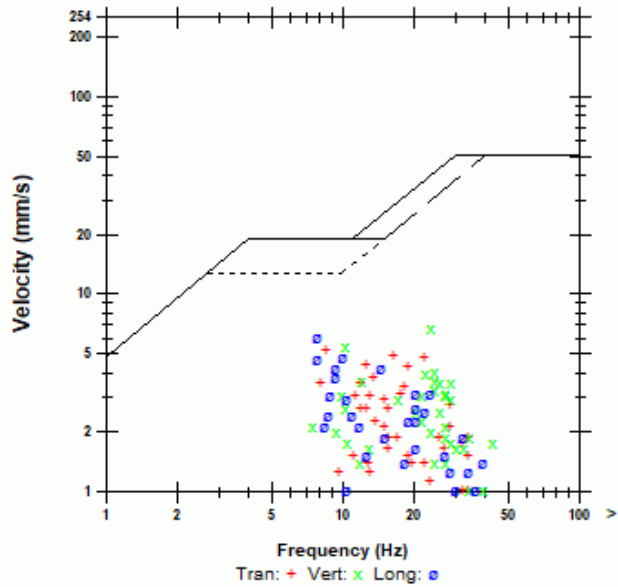
Combo Mode December 17, 2019 05:16:48
 Geophone is sandbagged near the Northwest corner of 92
 Cougarstone Manor SW adjacent ongoing blasting operations.

Microphone Linear Weighting
 PSPL 125.0 dB(L) at 1.033 sec.
 ZC Freq 21 Hz.
 Channel Test Disabled

	Tran	Vert	Long	
PPV	5.21	6.73	6.10	mm/s
ZC Freq	8.5	23	7.8	Hz
Time (Rel. to Trig)	0.593	0.413	0.615	sec
Peak Acceleration	0.0795	0.119	0.0663	g
Peak Displacement	0.0868	0.0606	0.117	mm
Sensor Check	Disabled	Disabled	Disabled	

Peak Vector Sum 6.97 mm/s At 0.622 sec.

USBM R18507 And OSMRE



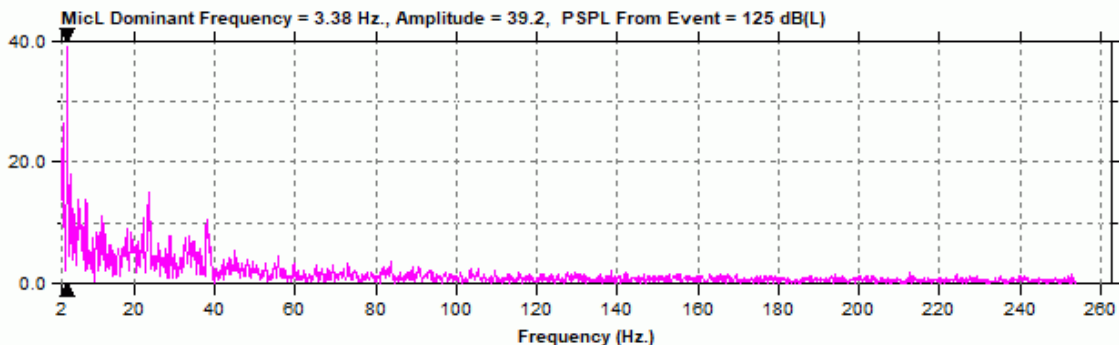
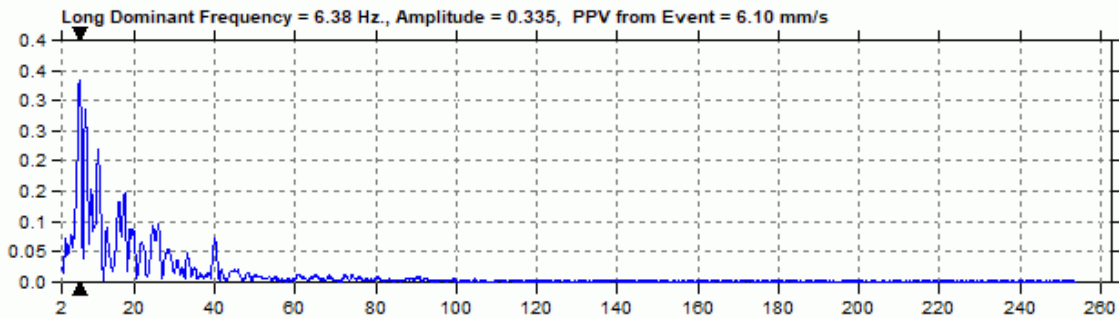
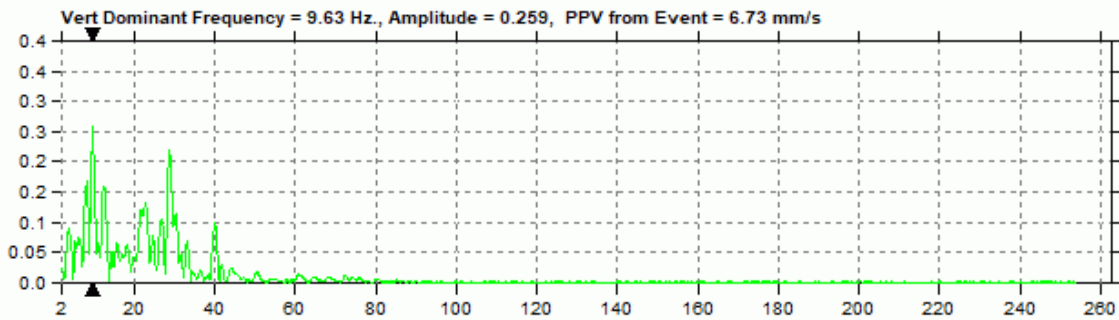
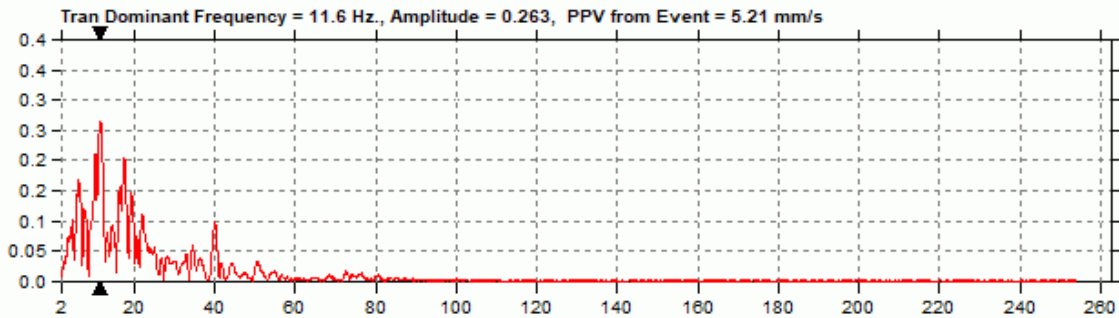
Date/Time Tran At 10:06:44 December 17, 2019
Trigger Source Geo: 5.00 mm/s
Range Geo: 254 mm/s
Sample Rate 5.0 sec. At 1024 Sps
Job Number 8177

Serial Number BE20408 V 10.72-8.17 MiniMate Plus
Battery Level 7.0 Volts
Unit Calibration October 21, 2019 by Instantel
File Name V40818T8.380W

Notes
Location: 92 Cougarstone Manor SW, Calgary, AB
Client: McCaw's Drilling and Blasting
User Name: Explotech Engineering Ltd.
General: Sandbagged on ground

Extended Notes
Combo Mode December 17, 2019 05:16:48
Geophone is sandbagged near the Northwest corner of 92
Cougarstone Manor SW adjacent ongoing blasting operations.

Post Event Notes



Date/Time Long At 10:07:13 December 17, 2019
 Trigger Source Geo: 5.00 mm/s
 Range Geo: 254 mm/s
 Sample Rate 5.0 sec. At 1024 Sps
 Job Number 8177

Serial Number BE16263 V 10.72-8.17 MiniMate Plus
 Battery Level 6.9 Volts
 Unit Calibration October 23, 2019 by InstanTel
 File Name R263I8T8.410W

Notes
 Location: 77 Cougar Ridge Close SW, Calgary, AB
 Client: McCaw's Drilling and Blasting
 User Name: Explotech Engineering Ltd.
 General: Sandbagged on ground

Post Event Notes

Extended Notes

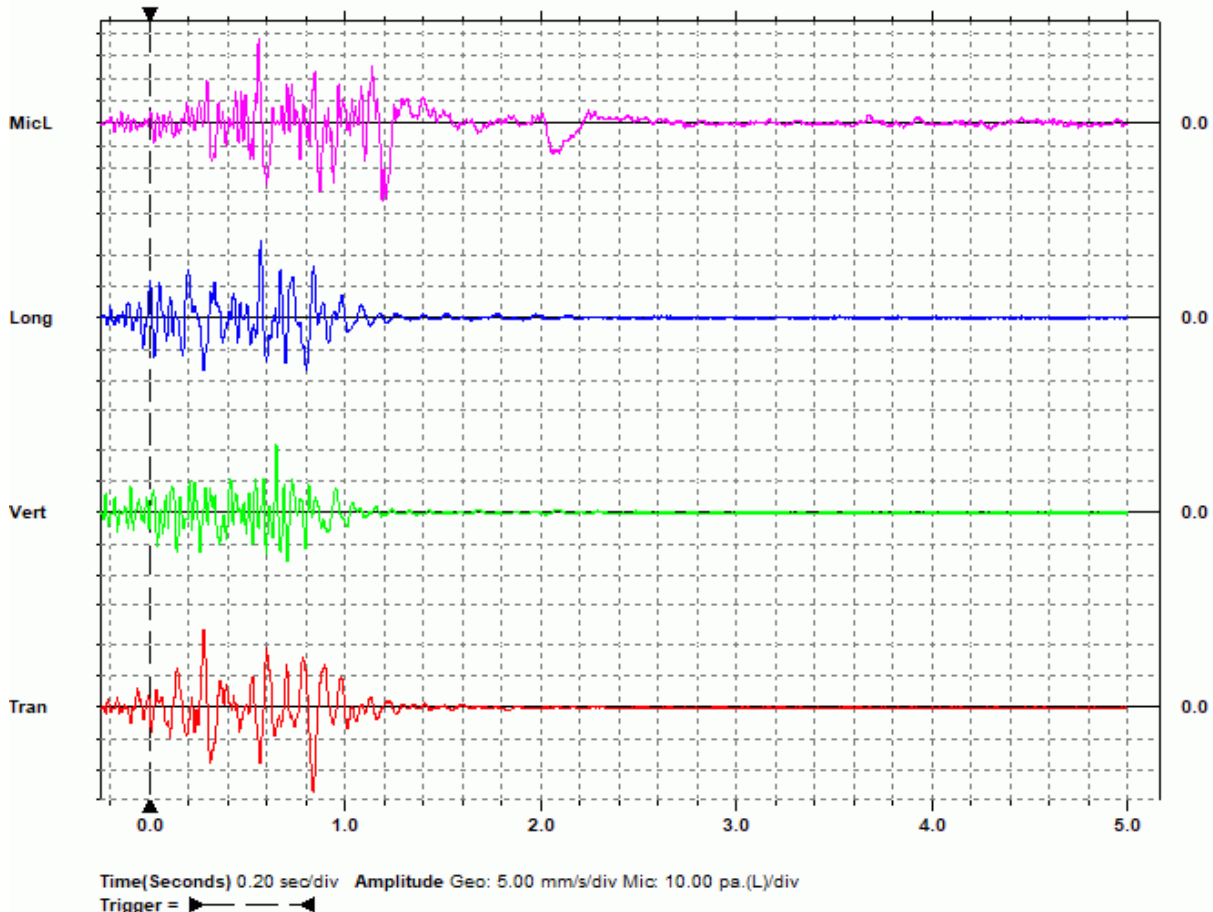
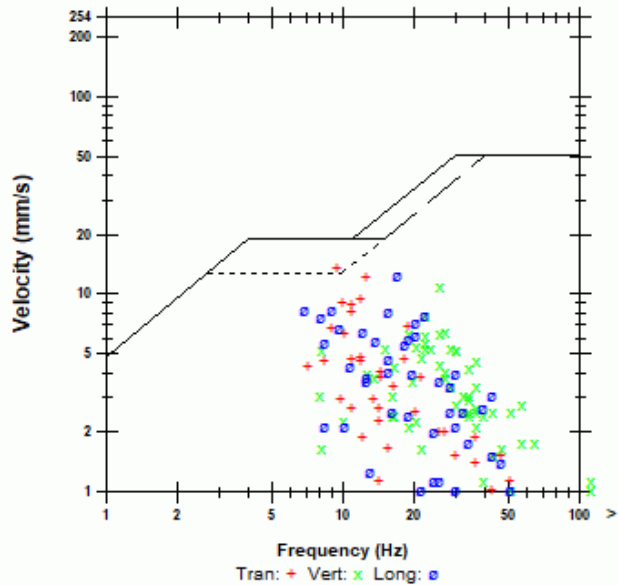
Combo Mode December 17, 2019 05:16:49
 Geophone is sandbagged along the Western wall in the backyard of 77 Cougar Ridge Close SW adjacent ongoing blasting operations.

Microphone Linear Weighting
 PSPL 125.3 dB(L) at 0.560 sec.
 ZC Freq 13 Hz.
 Channel Test Disabled

	Tran	Vert	Long	
PPV	13.5	11.0	12.4	mm/s
ZC Freq	9.5	26	17	Hz
Time (Rel. to Trig)	0.838	0.649	0.569	sec
Peak Acceleration	0.106	0.159	0.133	g
Peak Displacement	0.198	0.0863	0.136	mm
Sensor Check	Disabled	Disabled	Disabled	

Peak Vector Sum 15.7 mm/s At 0.838 sec.

USBM RI8507 And OSMRE



Date/Time Long At 10:07:13 December 17, 2019
Trigger Source Geo: 5.00 mm/s
Range Geo: 254 mm/s
Sample Rate 5.0 sec. At 1024 Sps
Job Number 8177

Serial Number BE16263 V 10.72-8.17 MiniMate Plus
Battery Level 6.9 Volts
Unit Calibration October 23, 2019 by InstanTel
File Name R263I8T8.410W

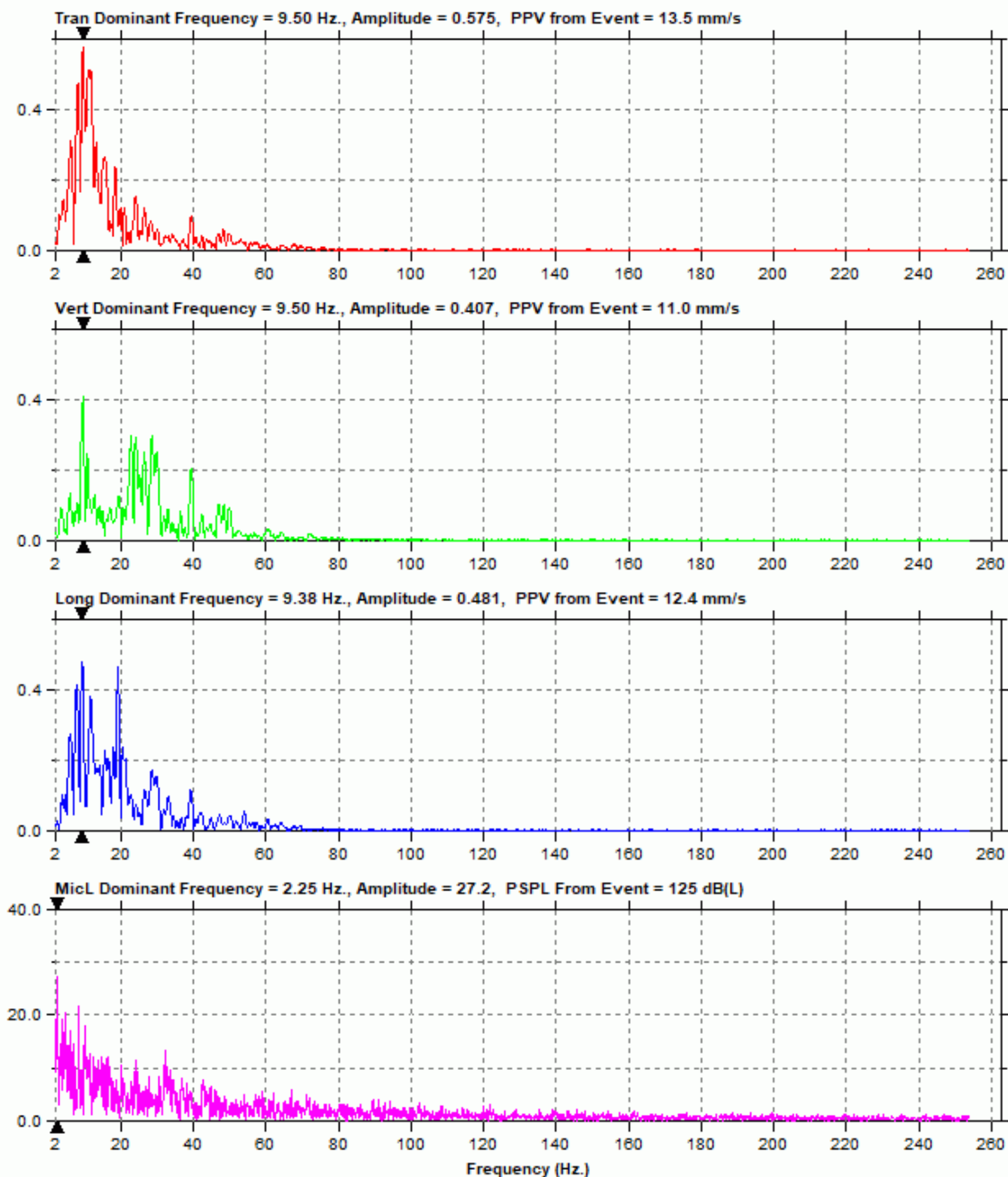
Notes

Location: 77 Cougar Ridge Close SW, Calgary, AB
Client: McCaw's Drilling and Blasting
User Name: Explotech Engineering Ltd.
General: Sandbagged on ground

Extended Notes

Combo Mode December 17, 2019 05:16:49
Geophone is sandbagged along the Western wall in the backyard of 77 Cougar Ridge Close SW adjacent ongoing blasting operations.

Post Event Notes



Date/Time Tran At 10:07:34 December 17, 2019
 Trigger Source Geo: 5.00 mm/s
 Range Geo: 254 mm/s
 Sample Rate 5.0 sec. At 1024 Sps
 Job Number 8177

Serial Number BE11251 V 10.72-8.17 MiniMate Plus
 Battery Level 6.9 Volts
 Unit Calibration October 23, 2019 by InstanTel
 File Name M251I8T8.4M0W

Notes
 Location: 97 Cougar Ridge Close SW, Calgary, AB
 Client: McCaw's Drilling and Blasting
 User Name: Explotech Engineering Ltd.
 General: Sandbagged on ground

Post Event Notes

Extended Notes

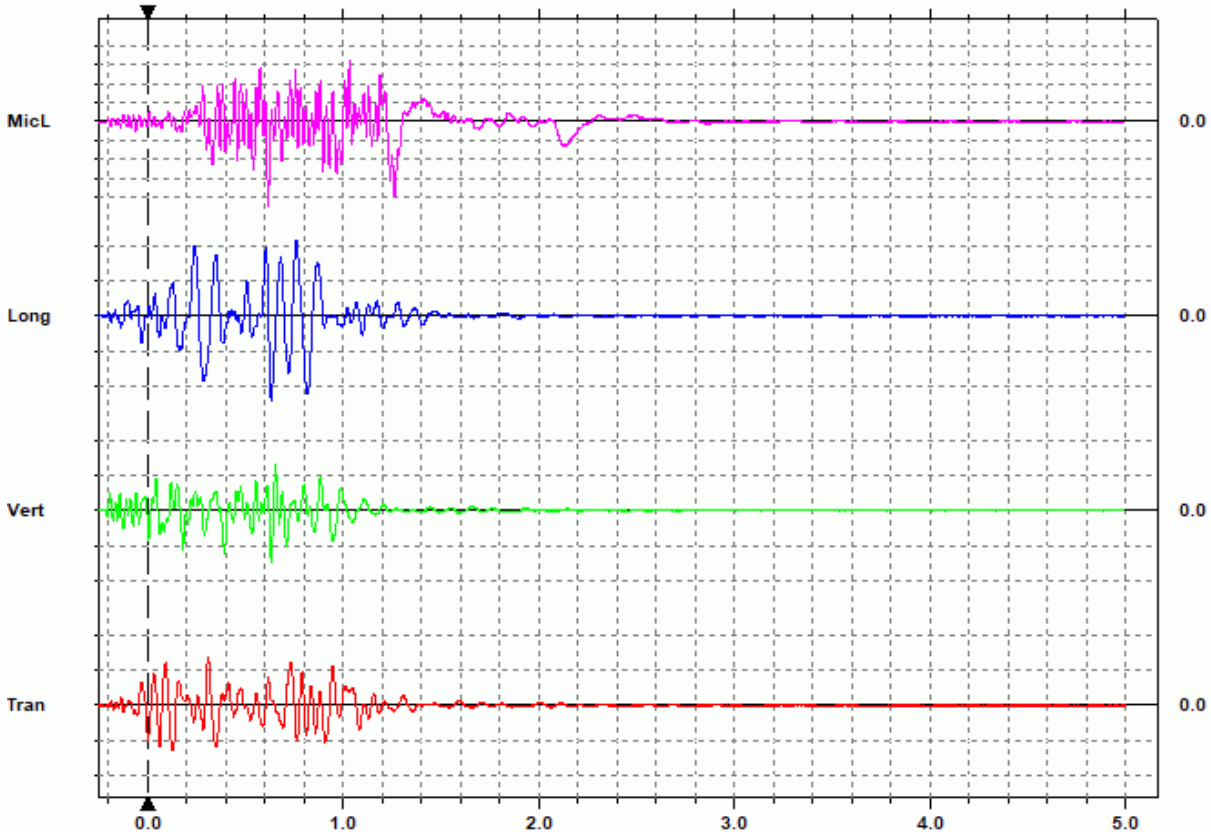
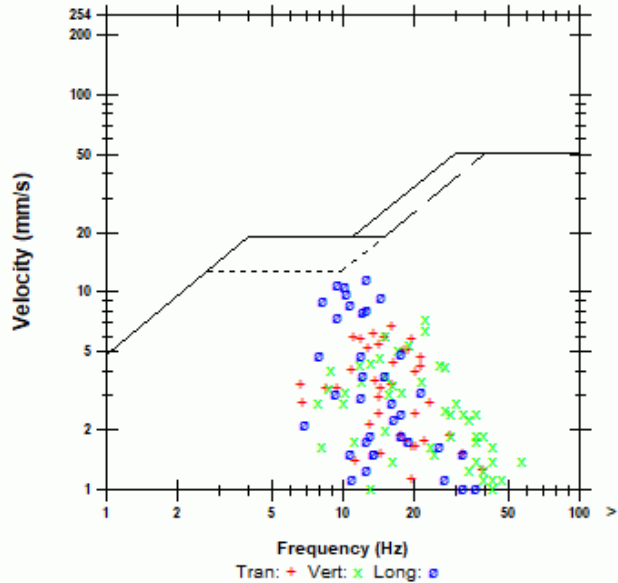
Combo Mode December 17, 2019 05:16:48
 Geophone is sandbagged under the stairs of the backyard deck at 97 Cougar Ridge Close SW adjacent ongoing blasting operations.

Microphone Linear Weighting
 PSPL 126.8 dB(L) at 0.615 sec.
 ZC Freq 22 Hz.
 Channel Test Disabled

	Tran	Vert	Long	
PPV	6.73	7.37	11.8	mm/s
ZC Freq	16	22	12	Hz
Time (Rel. to Trig)	0.309	0.632	0.631	sec
Peak Acceleration	0.0795	0.106	0.159	g
Peak Displacement	0.0873	0.0591	0.186	mm
Sensor Check	Disabled	Disabled	Disabled	

Peak Vector Sum 13.9 mm/s At 0.631 sec.

USBM R18507 And OSMRE



Time(Seconds) 0.20 sec/div Amplitude Geo: 5.00 mm/s/div Mic: 10.00 pa.(L)/div
 Trigger =

Date/Time Tran At 10:07:34 December 17, 2019
Trigger Source Geo: 5.00 mm/s
Range Geo: 254 mm/s
Sample Rate 5.0 sec. At 1024 Sps
Job Number 8177

Serial Number BE11251 V 10.72-8.17 MiniMate Plus
Battery Level 6.9 Volts
Unit Calibration October 23, 2019 by InstanTel
File Name M251I8T8.4M0W

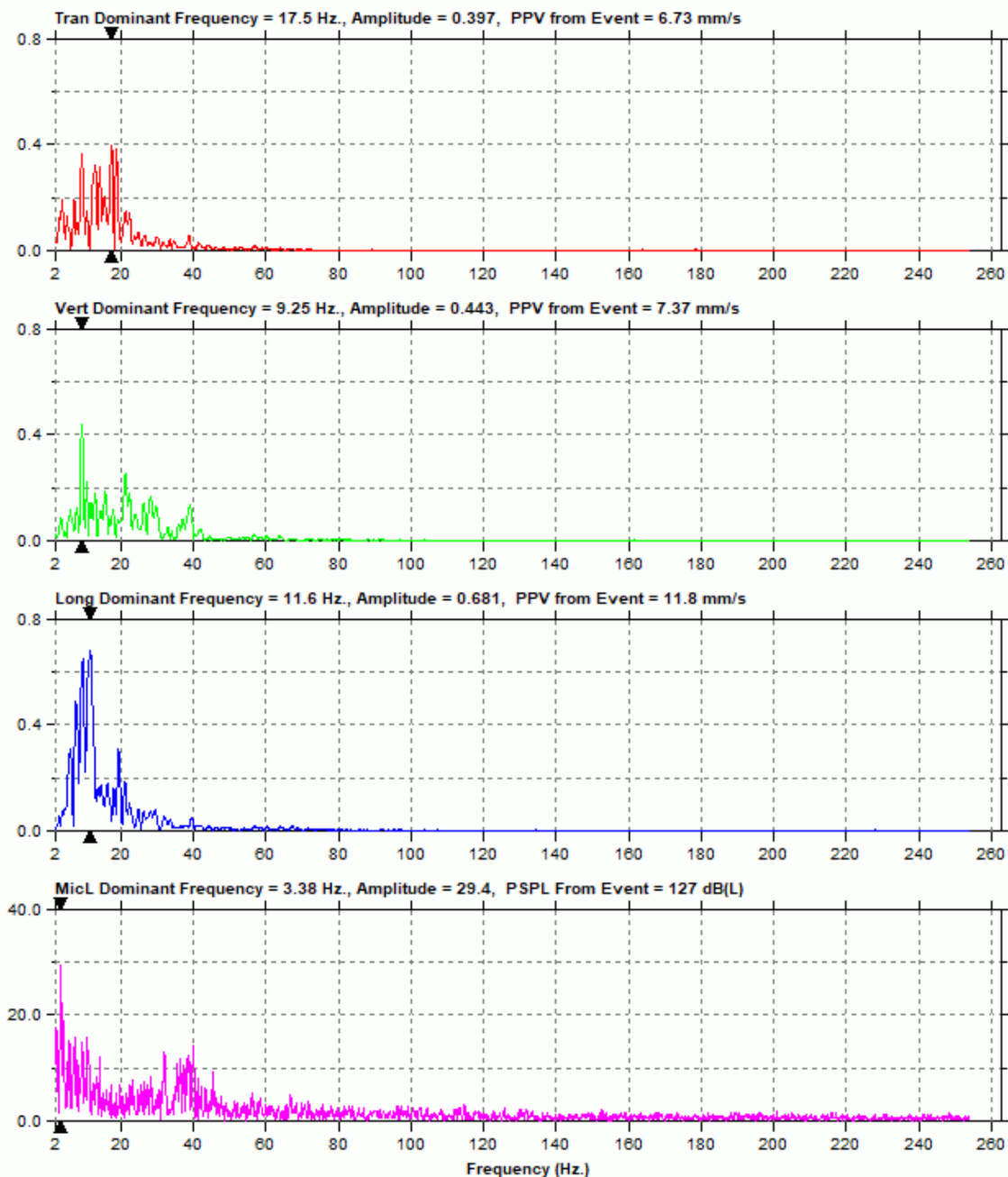
Notes

Location: 97 Cougar Ridge Close SW, Calgary, AB
Client: McCaw's Drilling and Blasting
User Name: Explotech Engineering Ltd.
General: Sandbagged on ground

Extended Notes

Combo Mode December 17, 2019 05:16:48
Geophone is sandbagged under the stairs of the backyard deck at 97 Cougar Ridge Close SW adjacent ongoing blasting operations.

Post Event Notes



Date/Time Tran At 16:28:19 December 18, 2019
 Trigger Source Geo: 5.00 mm/s
 Range Geo: 254 mm/s
 Sample Rate 5.0 sec. At 1024 Sps
 Job Number 8177

Serial Number BE20408 V 10.72-8.17 MiniMate Plus
 Battery Level 6.9 Volts
 Unit Calibration October 21, 2019 by Instantel
 File Name V408I8VK.F70W

Notes
 Location: 92 Cougarstone Manor SW, Calgary, AB
 Client: McCaw's Drilling and Blasting
 User Name: Explotech Engineering Ltd.
 General: Sandbagged on ground

Post Event Notes

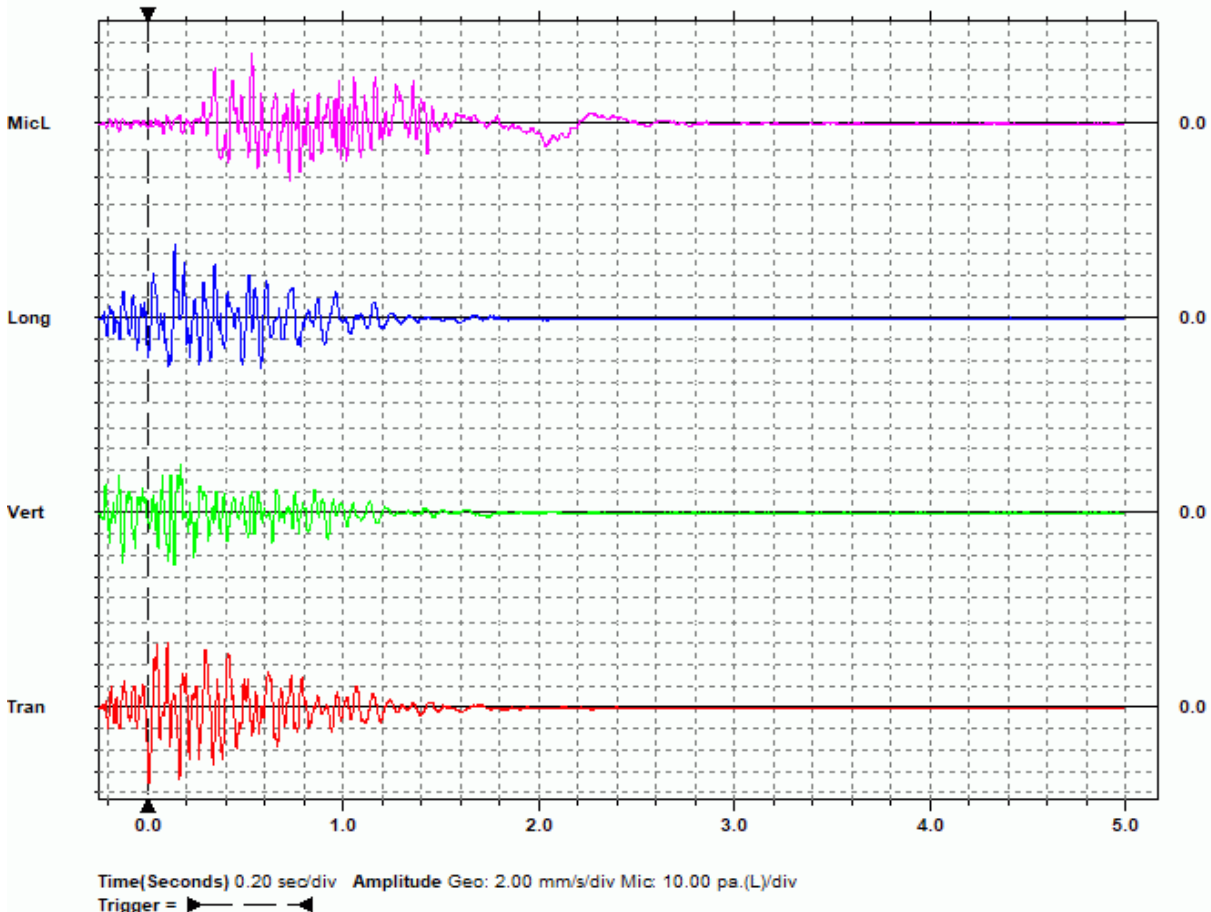
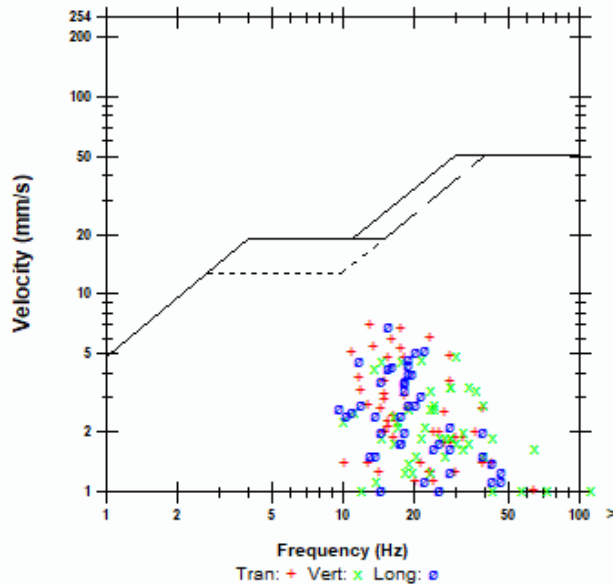
Extended Notes
 Combo Mode December 18, 2019 05:16:47
 Geophone is sandbagged near the Northwest corner of 92
 Cougarstone Manor SW adjacent ongoing blasting operations.

Microphone Linear Weighting
 P SPL 122.4 dB(L) at 0.531 sec.
 ZC Freq 22 Hz.
 Channel Test Disabled

	Tran	Vert	Long	
PPV	7.11	4.95	6.86	mm/s
ZC Freq	13	30	16	Hz
Time (Rel. to Trig)	0.005	0.136	0.138	sec
Peak Acceleration	0.133	0.119	0.106	g
Peak Displacement	0.0721	0.0499	0.0663	mm
Sensor Check	Disabled	Disabled	Disabled	

Peak Vector Sum 8.38 mm/s At 0.138 sec.

USBM RI8507 And OSMRE



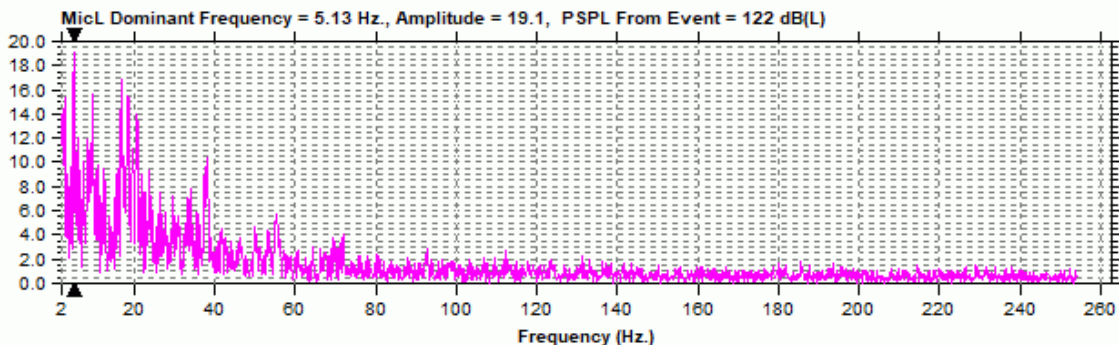
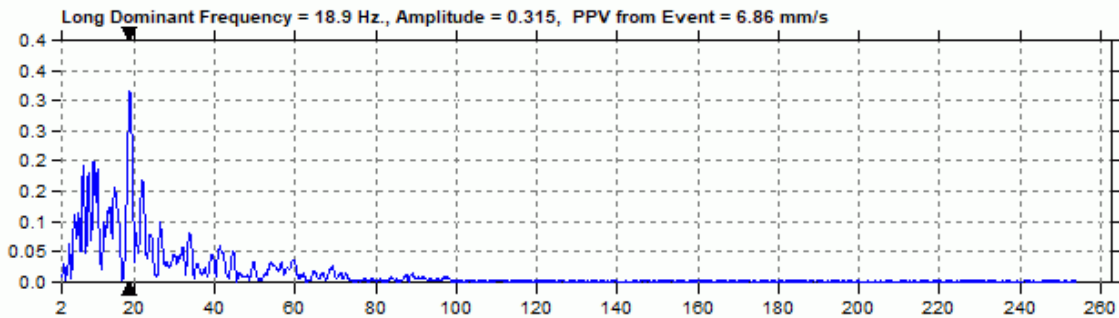
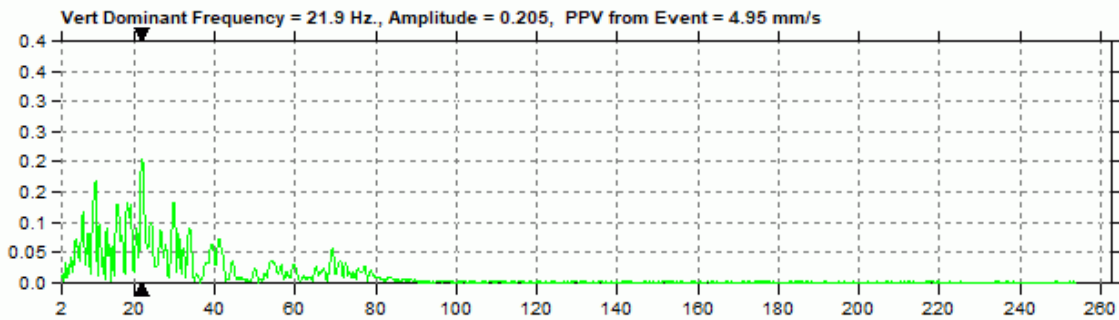
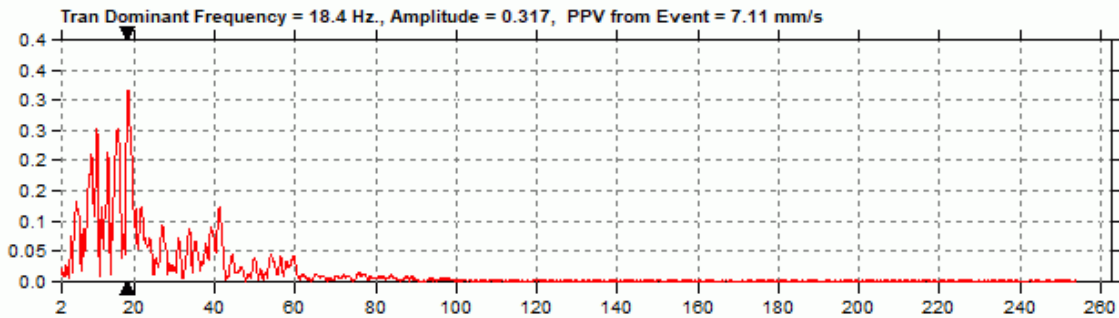
Date/Time Tran At 16:28:19 December 18, 2019
Trigger Source Geo: 5.00 mm/s
Range Geo: 254 mm/s
Sample Rate 5.0 sec. At 1024 Sps
Job Number 8177

Serial Number BE20408 V 10.72-8.17 MiniMate Plus
Battery Level 6.9 Volts
Unit Calibration October 21, 2019 by Instantel
File Name V408I8VK.F70W

Notes
Location: 92 Cougarstone Manor SW, Calgary, AB
Client: McCaw's Drilling and Blasting
User Name: Explotech Engineering Ltd.
General: Sandbagged on ground

Extended Notes
Combo Mode December 18, 2019 05:16:47
Geophone is sandbagged near the Northwest corner of 92
Cougarstone Manor SW adjacent ongoing blasting operations.

Post Event Notes



Date/Time Vert At 16:28:48 December 18, 2019
 Trigger Source Geo: 5.00 mm/s
 Range Geo: 254 mm/s
 Sample Rate 5.0 sec. At 1024 Sps
 Job Number 8177

Serial Number BE16263 V 10.72-8.17 MiniMate Plus
 Battery Level 6.9 Volts
 Unit Calibration October 23, 2019 by InstanTel
 File Name R283I8VK.G00W

Notes
 Location: 77 Cougar Ridge Close SW, Calgary, AB
 Client: McCaw's Drilling and Blasting
 User Name: Explotech Engineering Ltd.
 General: Sandbagged on ground

Post Event Notes

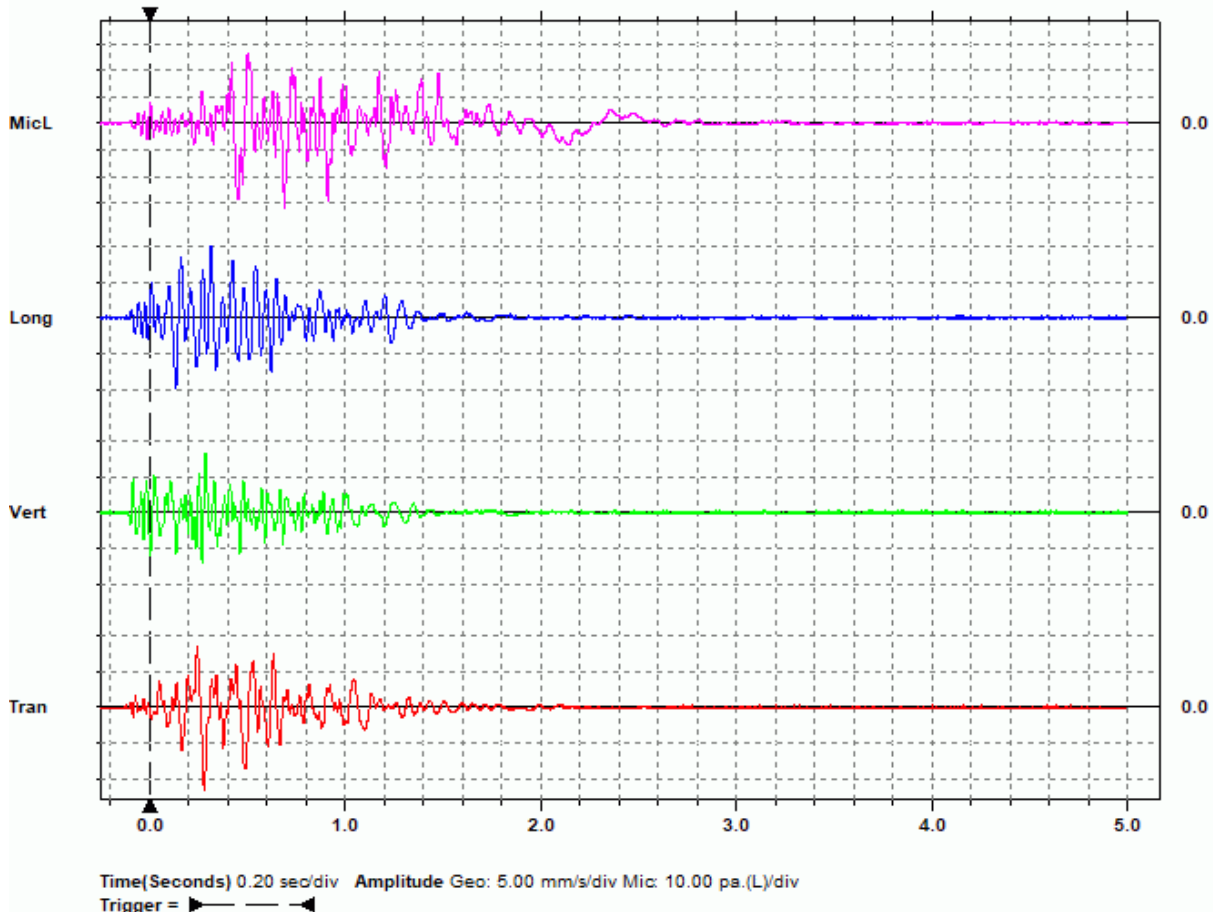
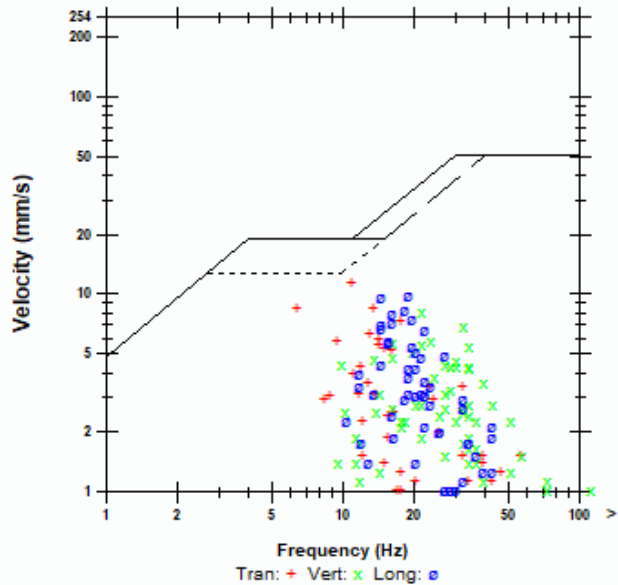
Extended Notes
 Combo Mode December 18, 2019 05:16:51
 Geophone is sandbagged along the Western wall in the backyard of 77 Cougar Ridge Close SW adjacent ongoing blasting operations.

Microphone Linear Weighting
 PSPL 124.0 dB(L) at 0.689 sec.
 ZC Freq 12 Hz.
 Channel Test Disabled

	Tran	Vert	Long	
PPV	11.6	8.25	9.91	mm/s
ZC Freq	11	21	19	Hz
Time (Rel. to Trig)	0.279	0.285	0.313	sec
Peak Acceleration	0.119	0.146	0.119	g
Peak Displacement	0.124	0.0560	0.0881	mm
Sensor Check	Disabled	Disabled	Disabled	

Peak Vector Sum 13.2 mm/s At 0.281 sec.

USBM RI8507 And OSMRE



Date/Time Vert At 16:28:48 December 18, 2019
Trigger Source Geo: 5.00 mm/s
Range Geo: 254 mm/s
Sample Rate 5.0 sec. At 1024 Sps
Job Number 8177

Serial Number BE16263 V 10.72-8.17 MiniMate Plus
Battery Level 6.9 Volts
Unit Calibration October 23, 2019 by InstanTel
File Name R263I8VK.G00W

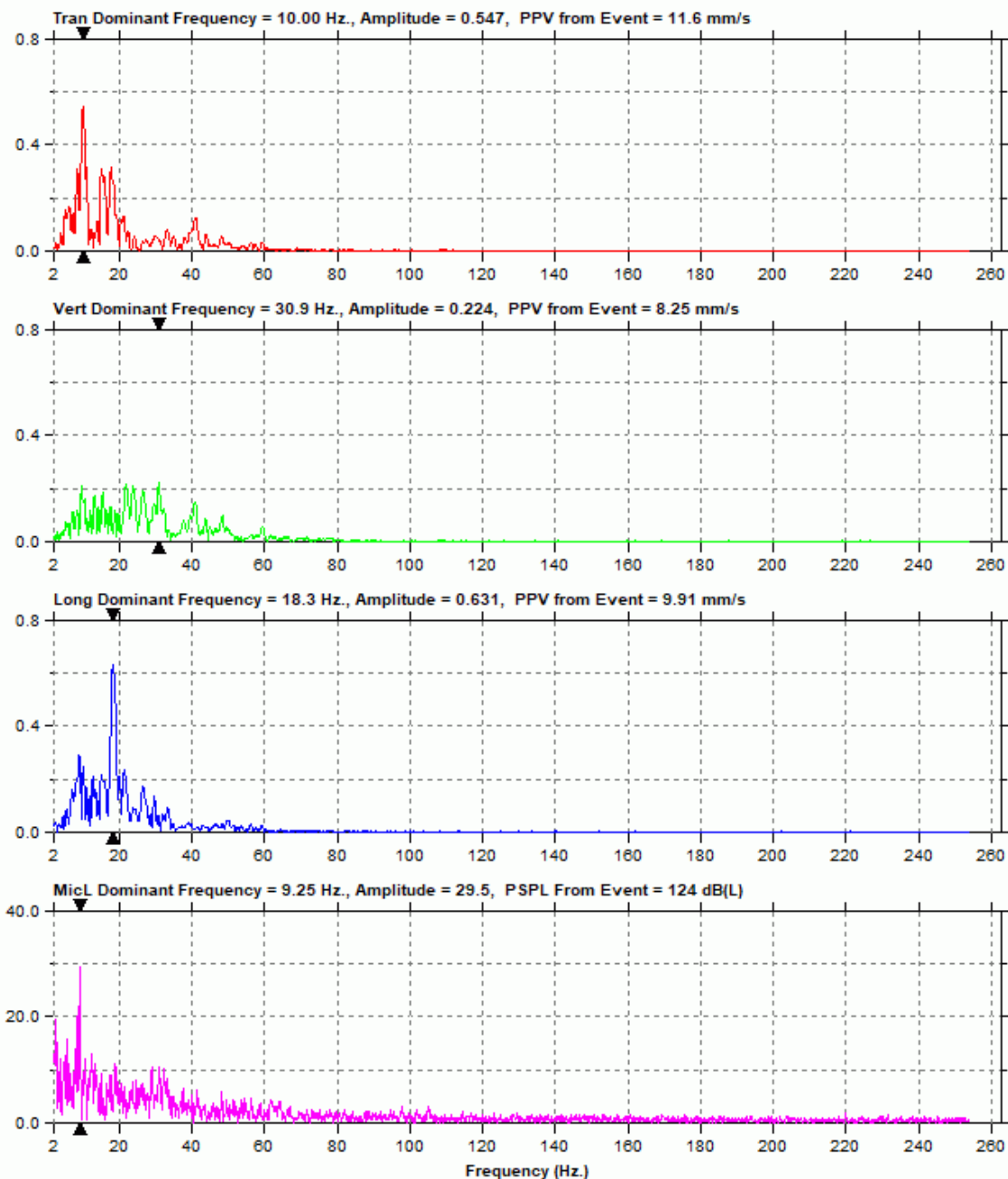
Notes

Location: 77 Cougar Ridge Close SW, Calgary, AB
Client: McCaw's Drilling and Blasting
User Name: Explotech Engineering Ltd.
General: Sandbagged on ground

Extended Notes

Combo Mode December 18, 2019 05:16:51
Geophone is sandbagged along the Western wall in the backyard of 77 Cougar Ridge Close SW adjacent ongoing blasting operations.

Post Event Notes



Date/Time Long At 16:29:08 December 18, 2019
 Trigger Source Geo: 5.00 mm/s
 Range Geo: 254 mm/s
 Sample Rate 5.0 sec. At 1024 Sps
 Job Number 8177

Serial Number BE11251 V 10.72-8.17 MiniMate Plus
 Battery Level 6.9 Volts
 Unit Calibration October 23, 2019 by InstanTel
 File Name M251I8VK.GK0W

Notes
 Location: 97 Cougar Ridge Close SW, Calgary, AB
 Client: McCaw's Drilling and Blasting
 User Name: Explotech Engineering Ltd.
 General: Sandbagged on ground

Post Event Notes

Extended Notes

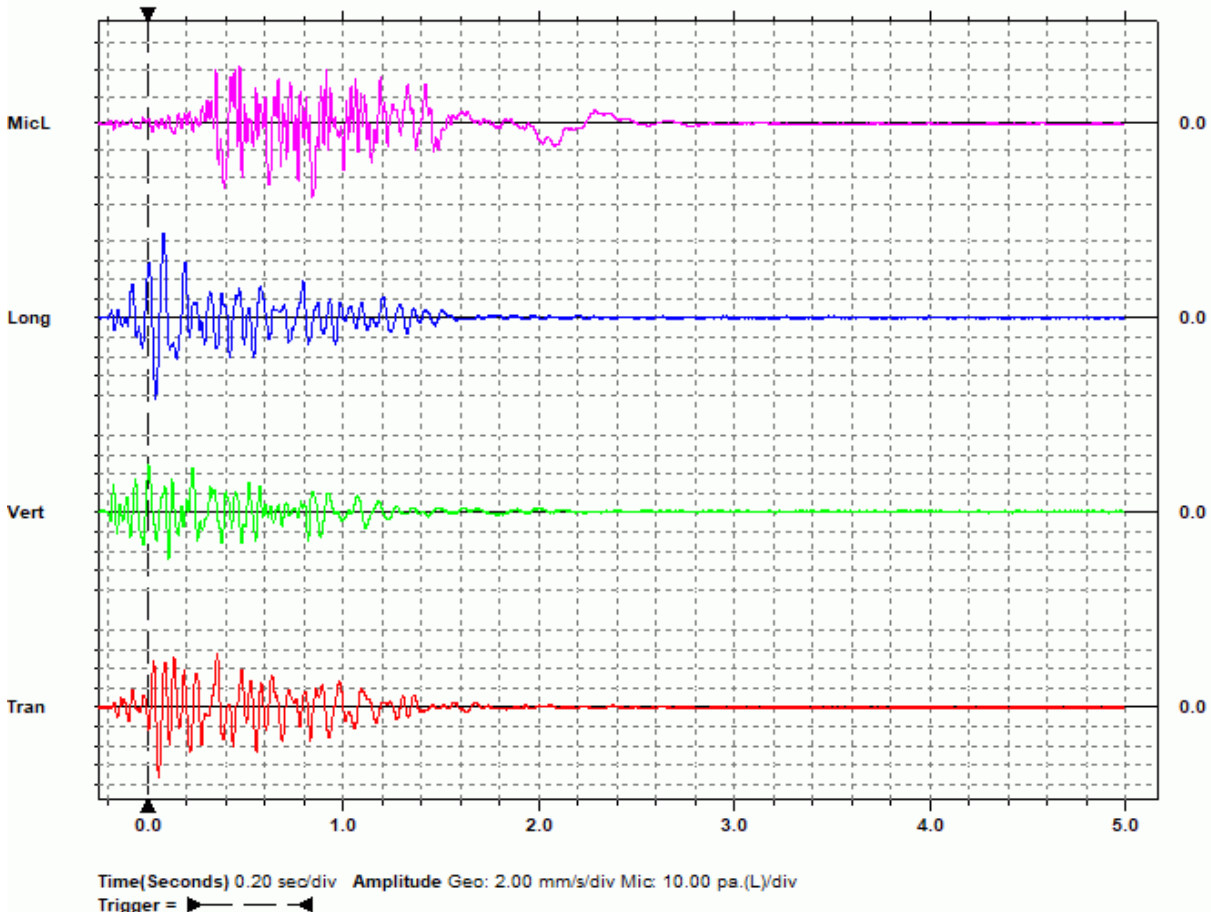
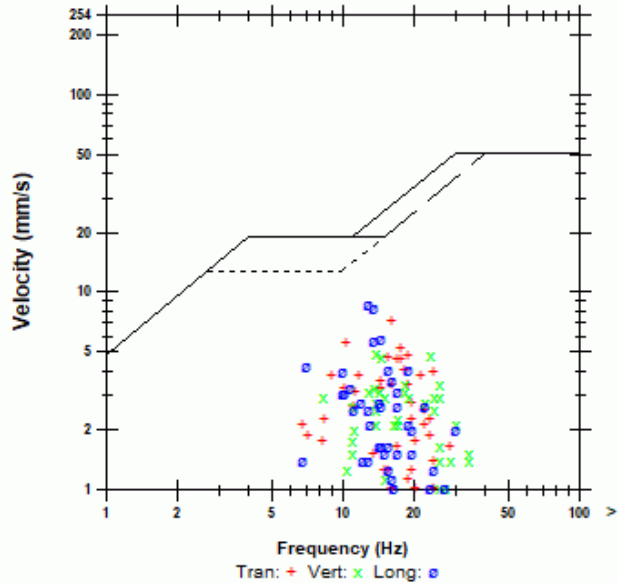
Combo Mode December 18, 2019 05:16:47
 Geophone is sandbagged under the stairs of the backyard deck at 97 Cougar Ridge Close SW adjacent ongoing blasting operations.

Microphone Linear Weighting
 PSPL 122.7 dB(L) at 0.842 sec.
 ZC Freq 10 Hz.
 Channel Test Disabled

	Tran	Vert	Long	
PPV	7.24	4.95	8.76	mm/s
ZC Freq	16	14	13	Hz
Time (Rel. to Trig)	0.056	0.003	0.079	sec
Peak Acceleration	0.0795	0.0795	0.0795	g
Peak Displacement	0.0714	0.0541	0.105	mm
Sensor Check	Disabled	Disabled	Disabled	

Peak Vector Sum 9.84 mm/s At 0.083 sec.

USBM R18507 And OSMRE



Date/Time Long At 16:29:08 December 18, 2019
Trigger Source Geo: 5.00 mm/s
Range Geo: 254 mm/s
Sample Rate 5.0 sec. At 1024 Sps
Job Number 8177

Serial Number BE11251 V 10.72-8.17 MiniMate Plus
Battery Level 6.9 Volts
Unit Calibration October 23, 2019 by InstanTel
File Name M25118VK.GK0W

Notes

Location: 97 Cougar Ridge Close SW, Calgary, AB
Client: McCaw's Drilling and Blasting
User Name: Explotech Engineering Ltd.
General: Sandbagged on ground

Extended Notes

Combo Mode December 18, 2019 05:16:47
Geophone is sandbagged under the stairs of the backyard deck at 97 Cougar Ridge Close SW adjacent ongoing blasting operations.

Post Event Notes

